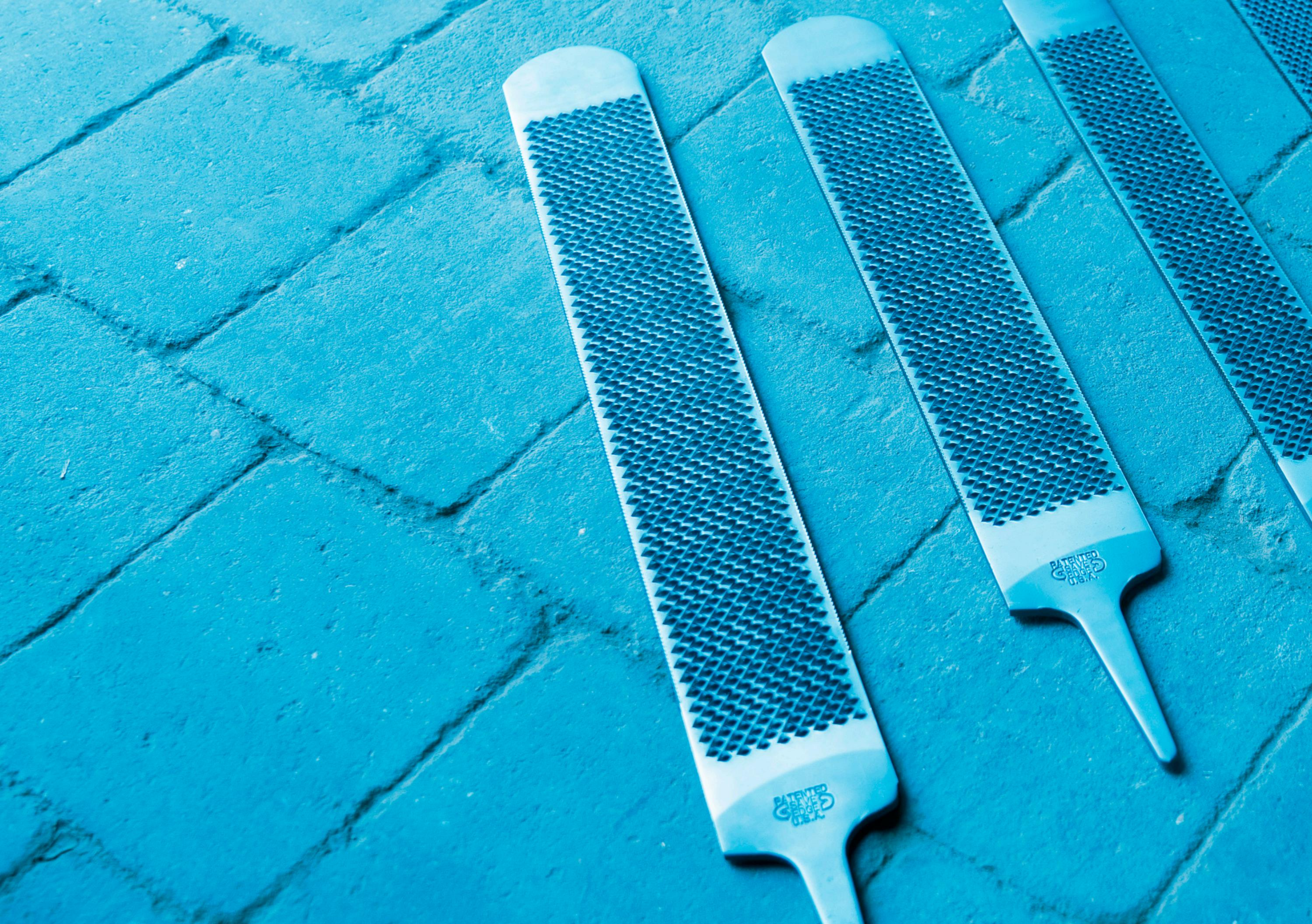




FIND YOUR
NEAREST DEALER

PRODUCT CATALOGUE

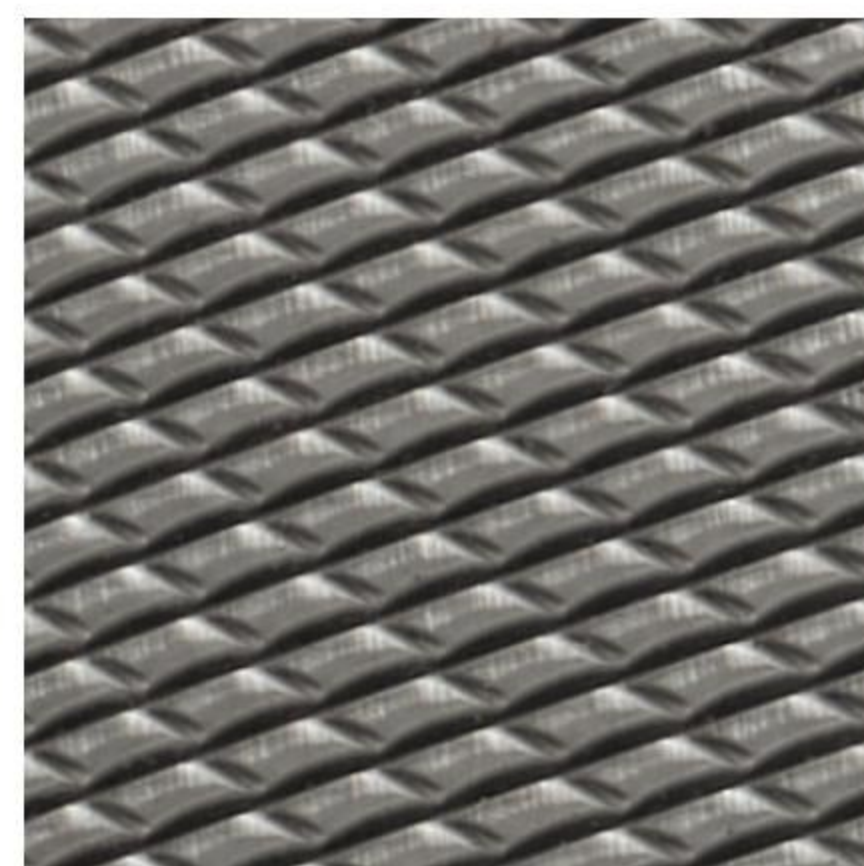
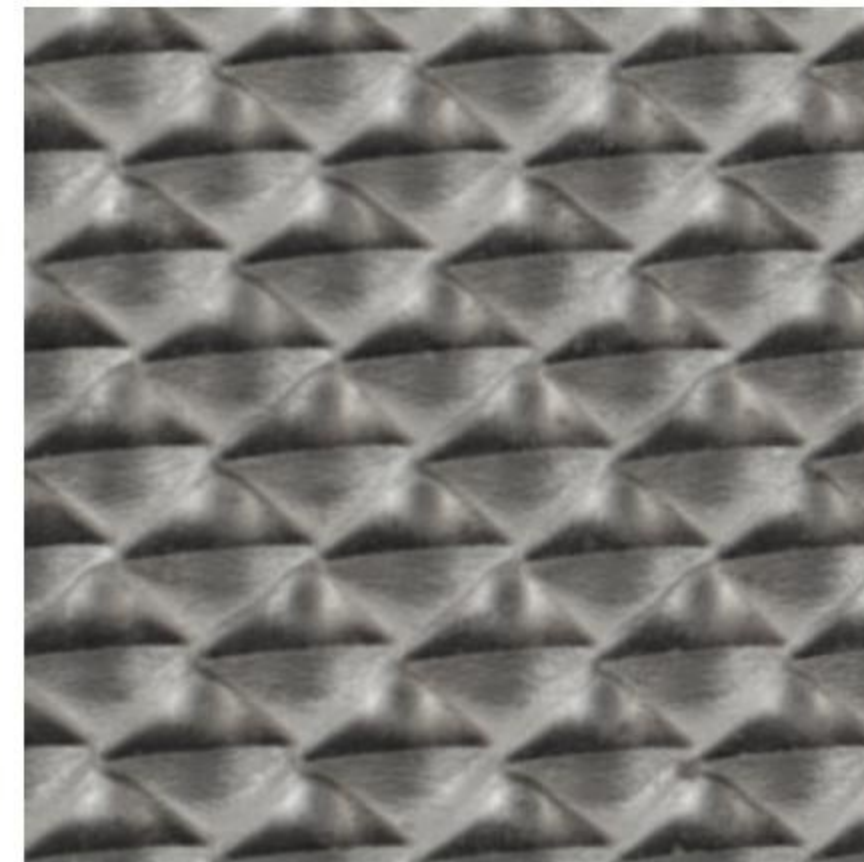
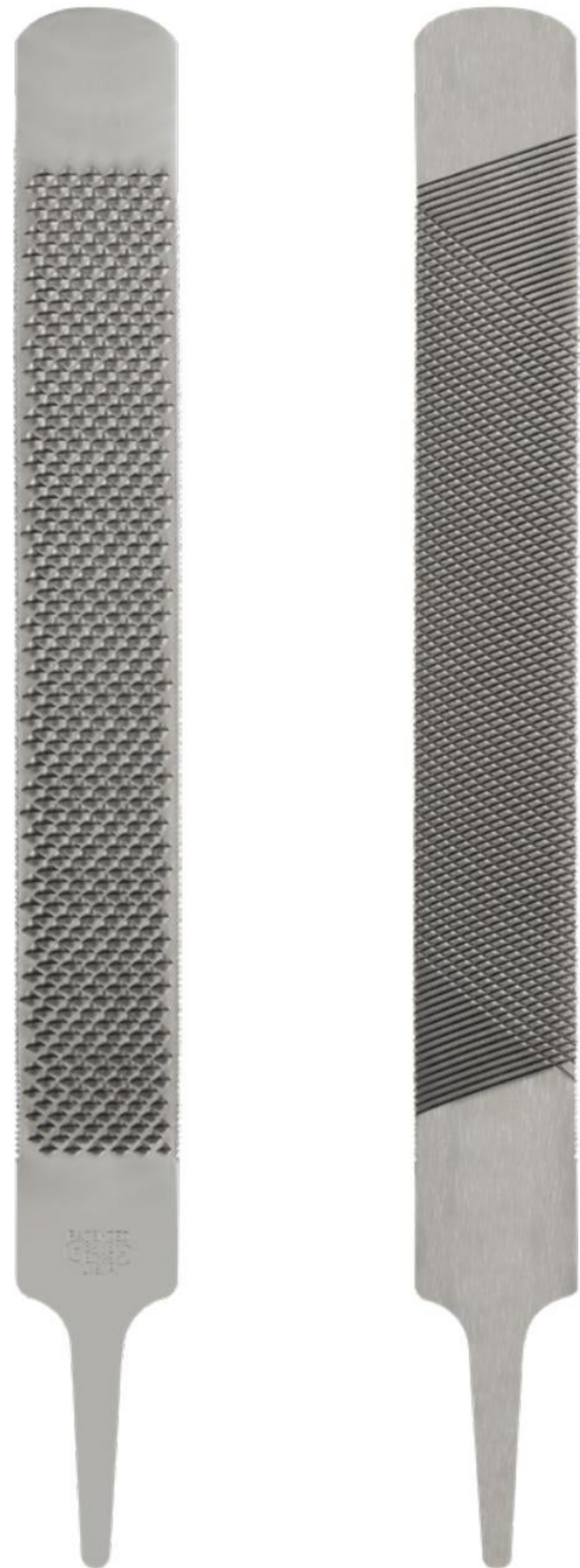
www.kerckhaert.com





THE SHARP FILE EXPERTS

ORIGINAL



Save Edge's ORIGINAL Rasp has a superior teeth design and a highquality sharpening process that gives it very smooth but aggressive cutting action.

Features

- Smooth yet aggressive cutting
- Superior teeth design
- Unique quality sharpening process

RASP CUT ★★ ★
 FILE FINISH ★★ ★

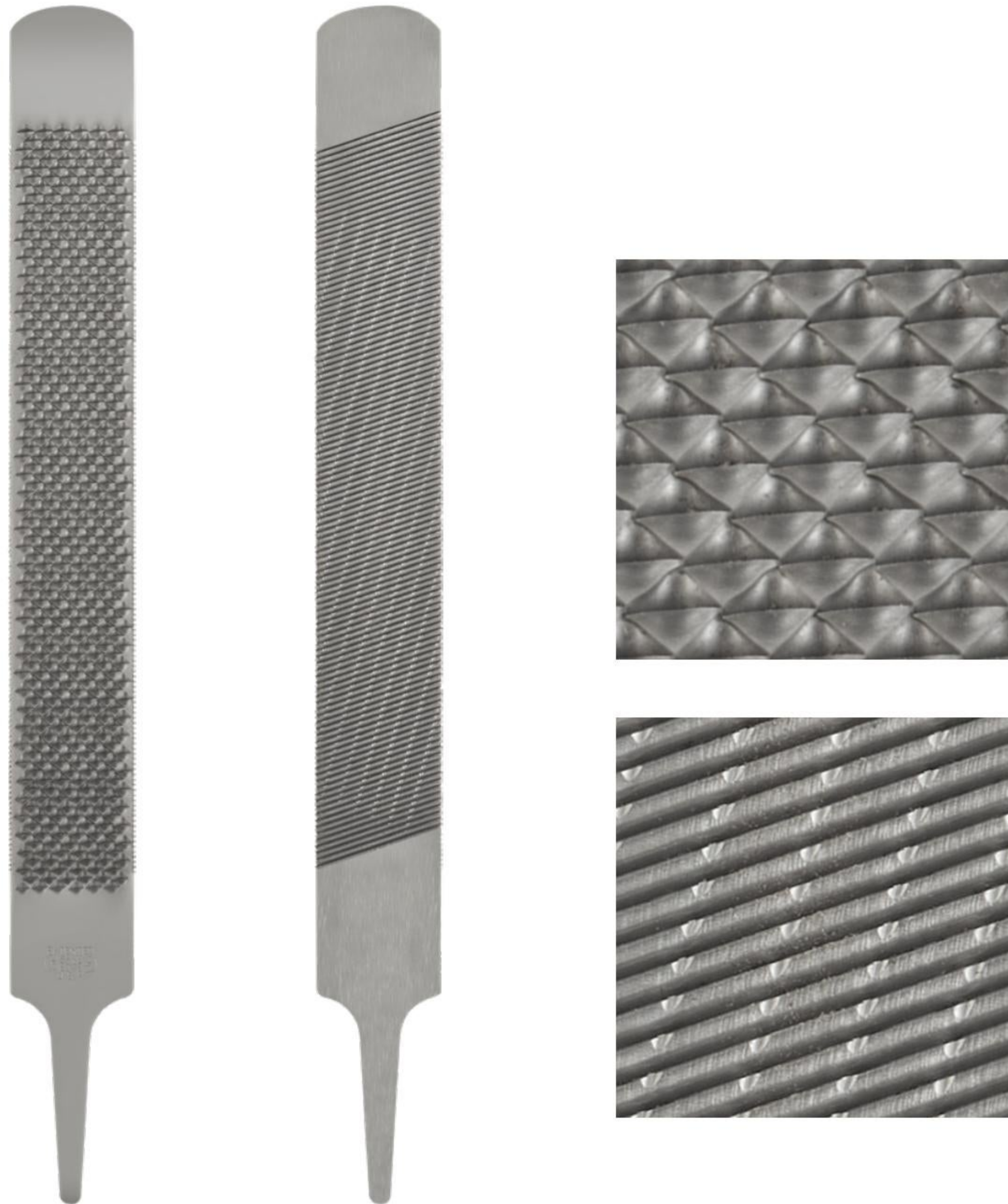
PHOTO FINISH

The PHOTO FINISH Rasp combines the best of both worlds: the Save Edge ORIGINAL rasp teeth on one side and our super smooth cutting teeth on the other. Experience the sharpness and speed of the ORIGINAL rasp teeth and the perfect finish on the file side for championship results

Features

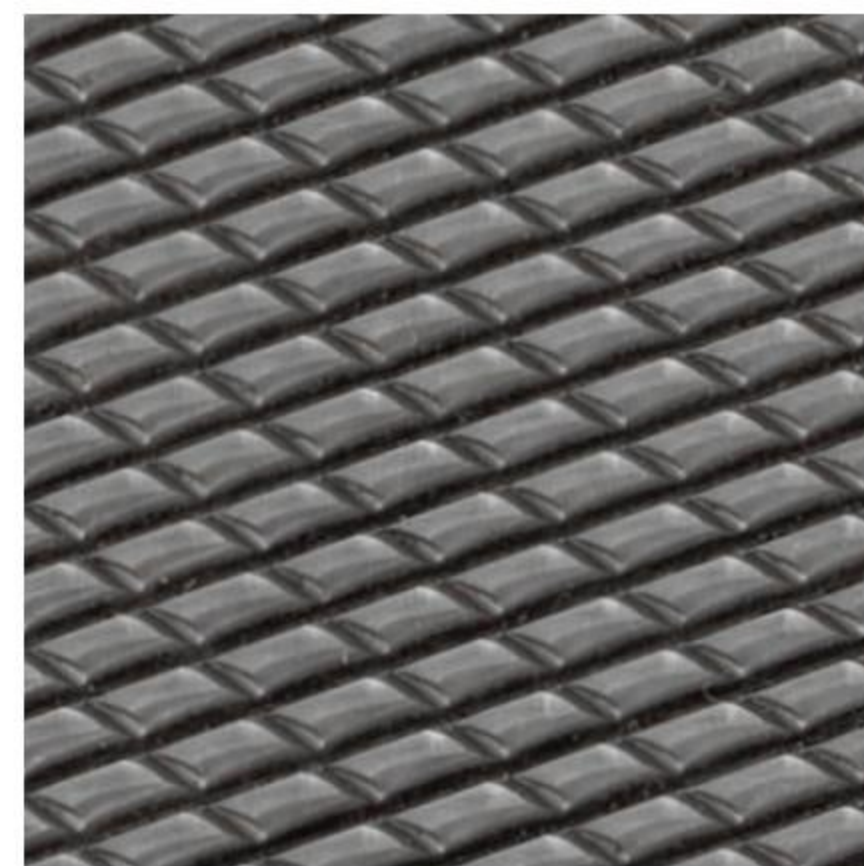
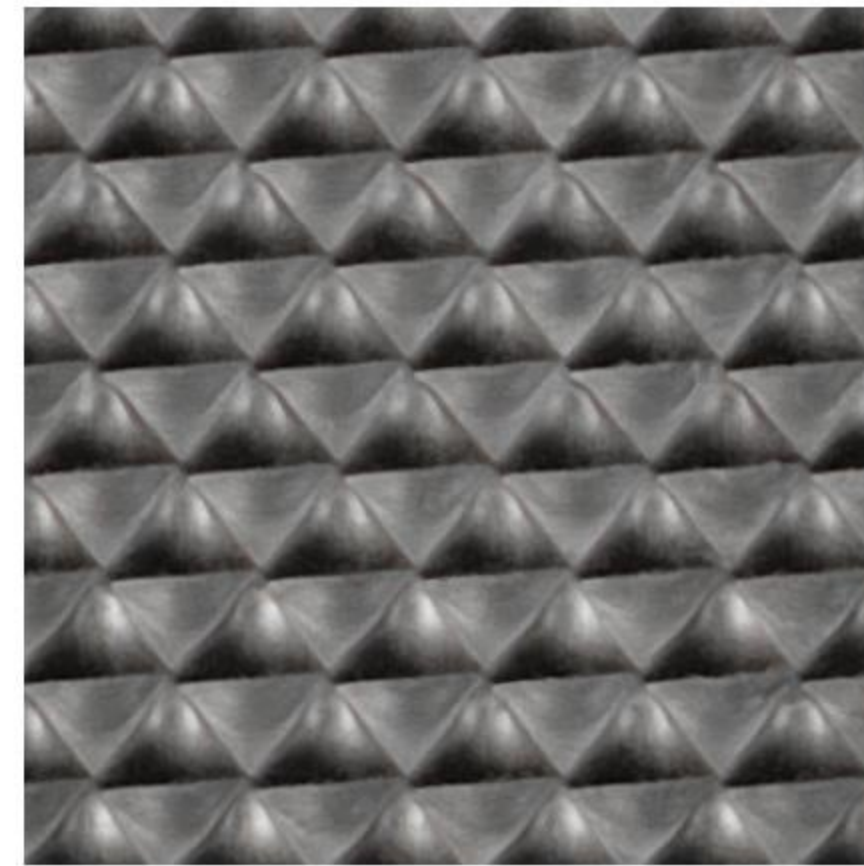
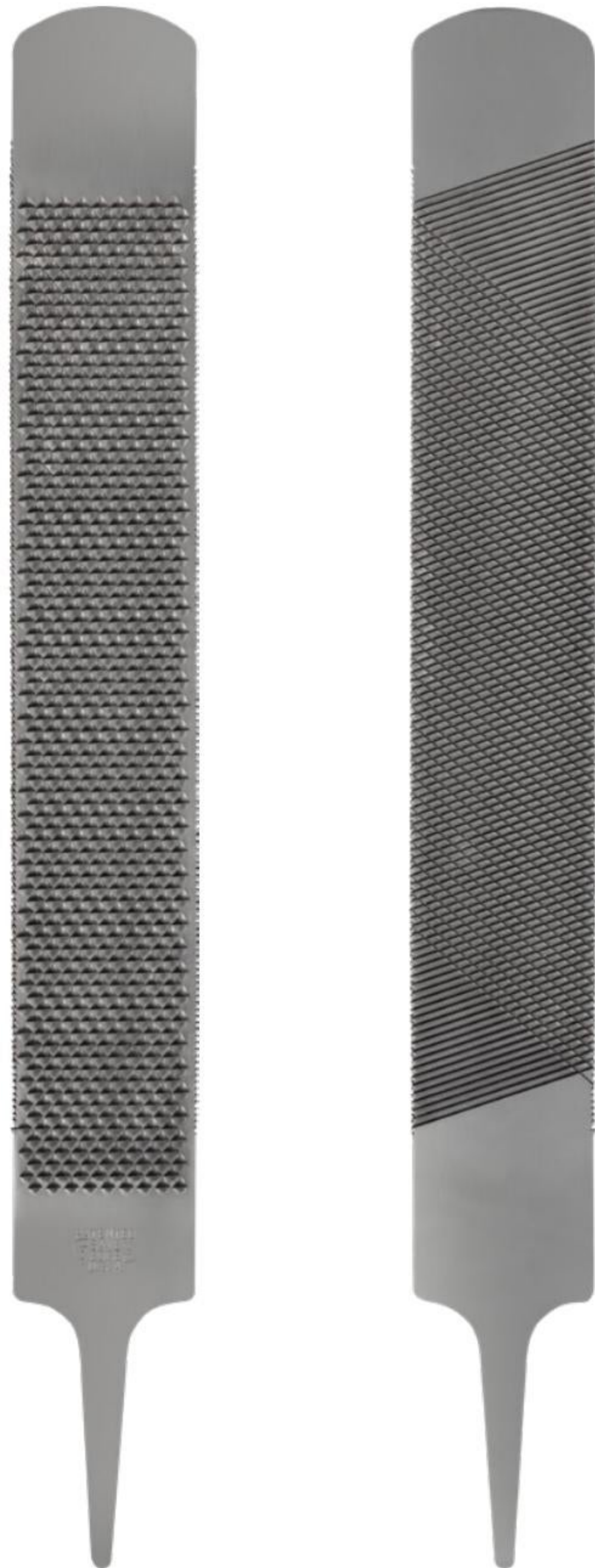
- Sharp teeth of the ORIGINAL rasp
- File side for perfect finish
- Unique sharpening process for high durability
- Top quality steel

RASP CUT ★★★
 FILE FINISH ★★★★★



Save Edge Photo Finish Hoof Rasp - 350 mm 725-0001-517

DARK HORSE



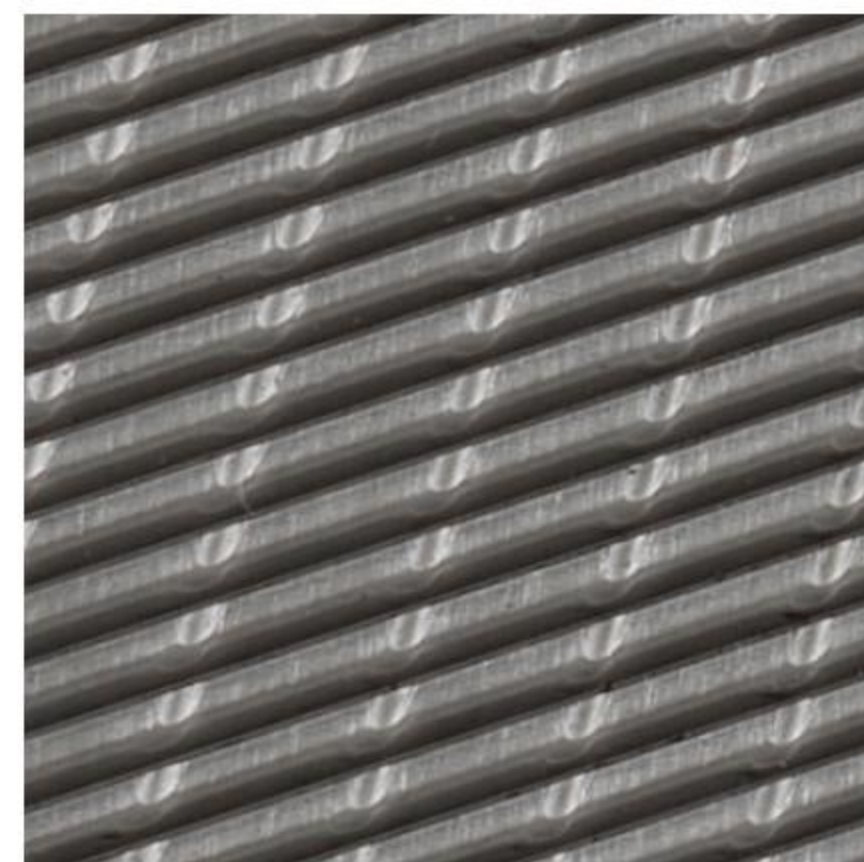
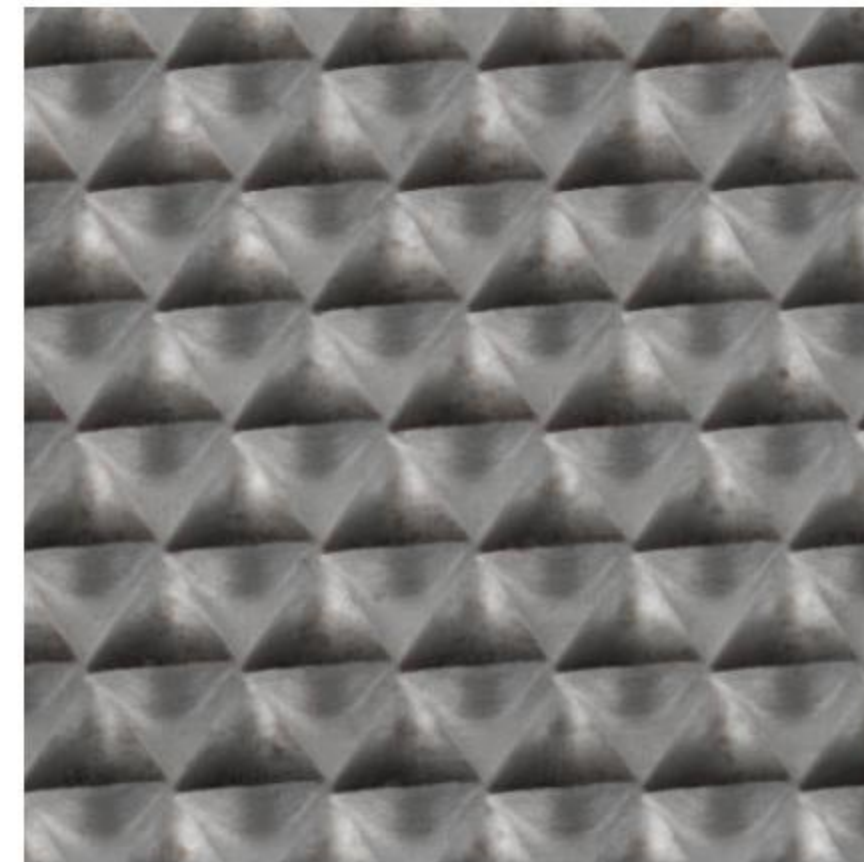
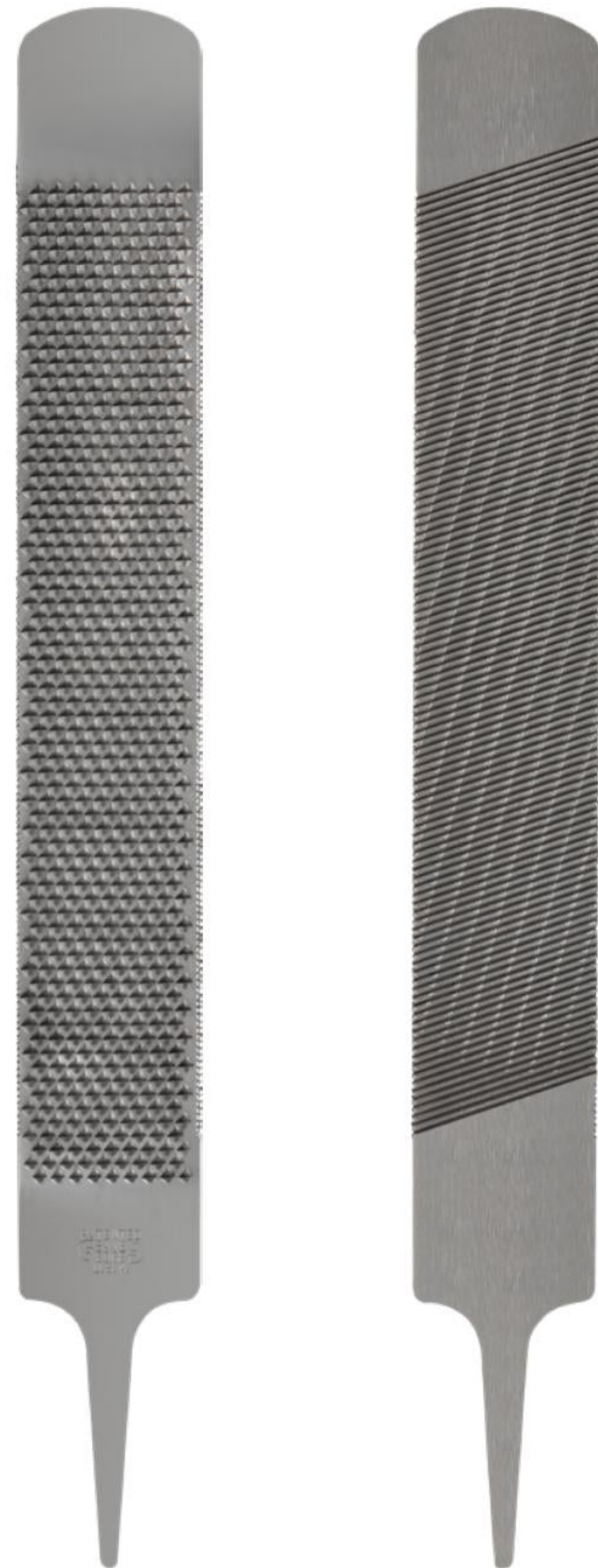
The DARK HORSE is 10% wider yet light and balanced, making it more efficient to use. The larger working surface helps improve levelling, control and efficiency. Both sides are designed to remove more material easier with a feature that provides less clogging and longevity of the rasp. Hybrid between the Save Edge Original and Save Edge 14" Beast

Features

- Lightweight
- 10% wider
- Unique sharpening technique
- Less clogging

RASP CUT ★★★
 FILE FINISH ★★

WHITE HORSE



The WHITE HORSE is 10% wider and thinner than our Photo Finish Rasp making it more efficient to use. Designed with very sharp edges with an overlapping cut which leaves a very smooth, glossy finish. Hybrid between the Photo Finish and the 14" Beast Rasp.

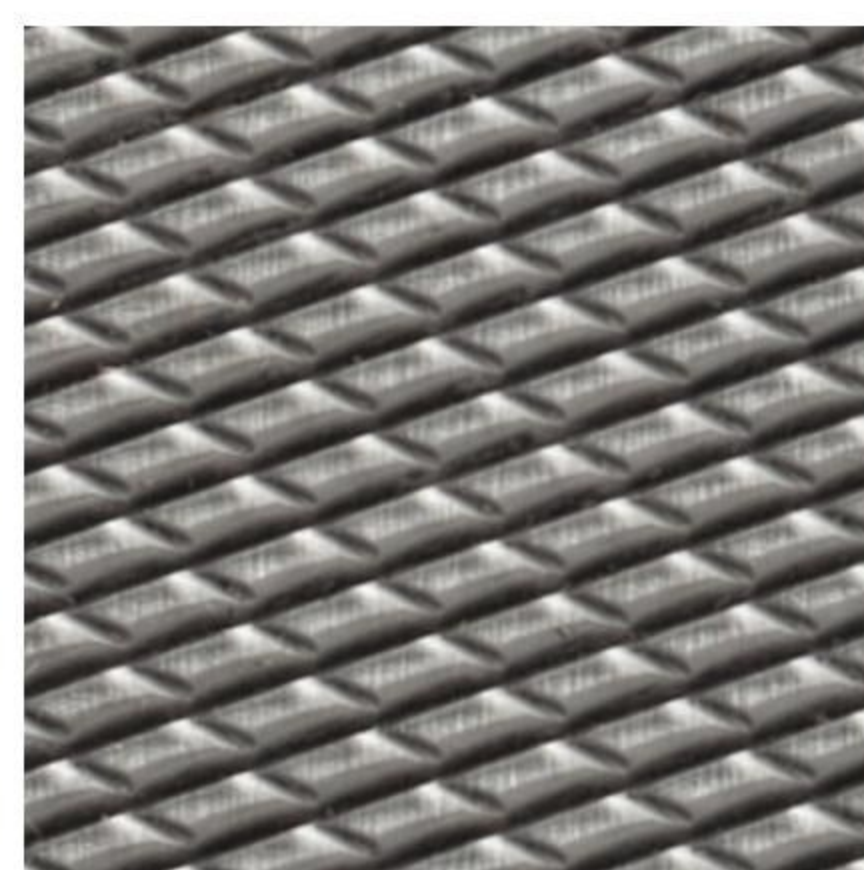
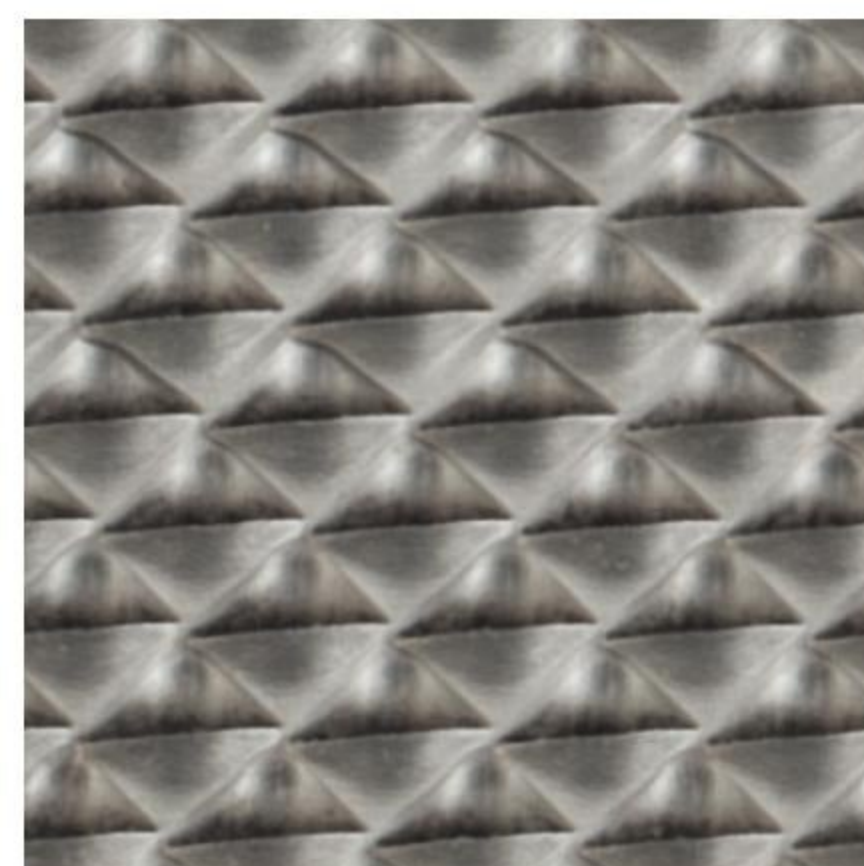
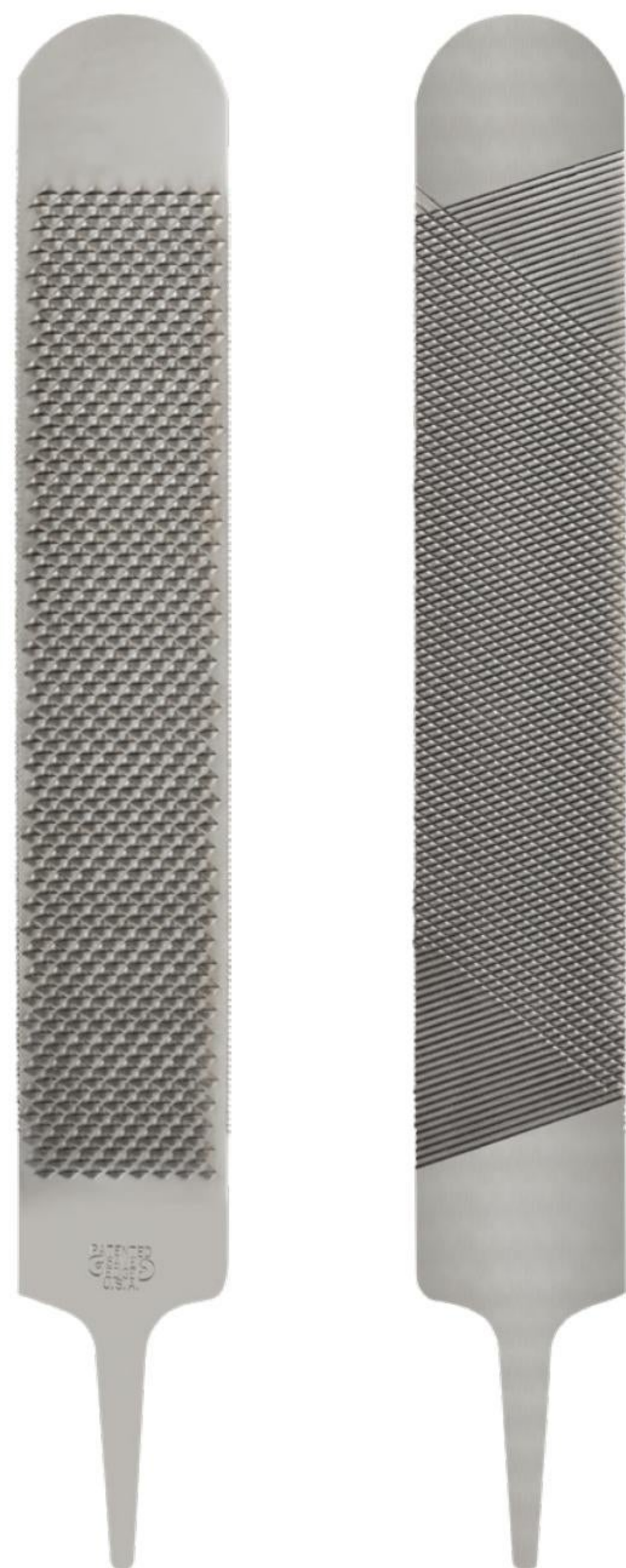
Features

- 10% wider
- Lightweight
- Easy levelling and flattening
- Unique sharpening process
- Very smooth finish

RASP CUT ★★★
 FILE FINISH ★★★★

Save Edge White Horse Hoof Rasp - 350 mm 725-0001-069

BEAST 14"



The BEAST allows you to achieve a level hoof in fewer strokes. The large, rounded end provides a comfortable grip while working on the hoof. This rasp can be used with the normal Save Edge rasp handles.

Features

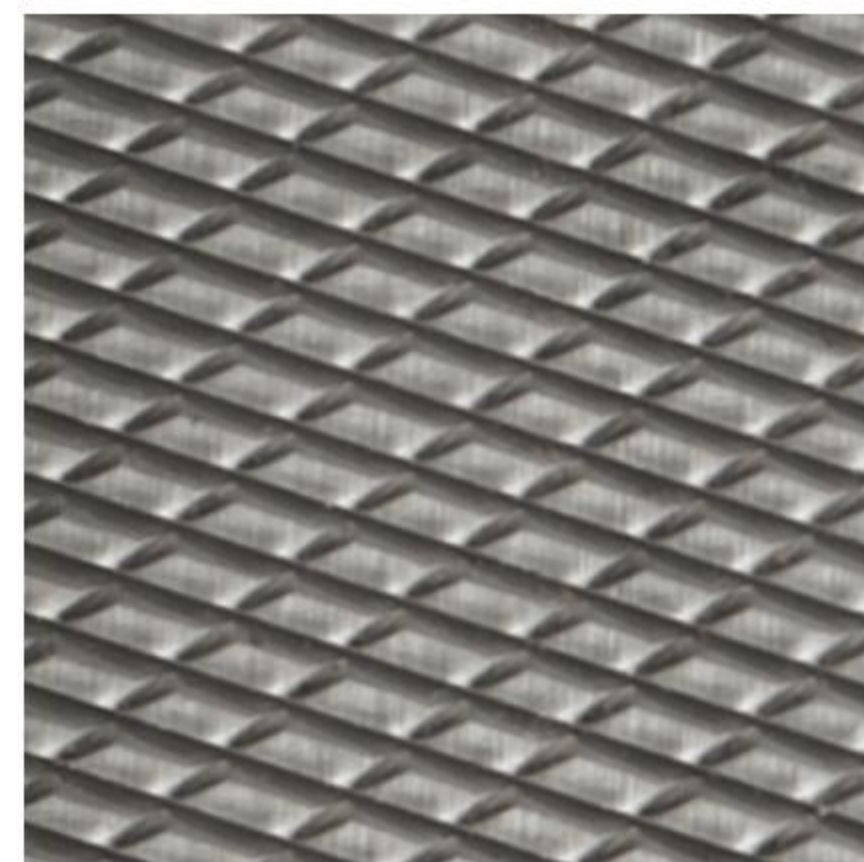
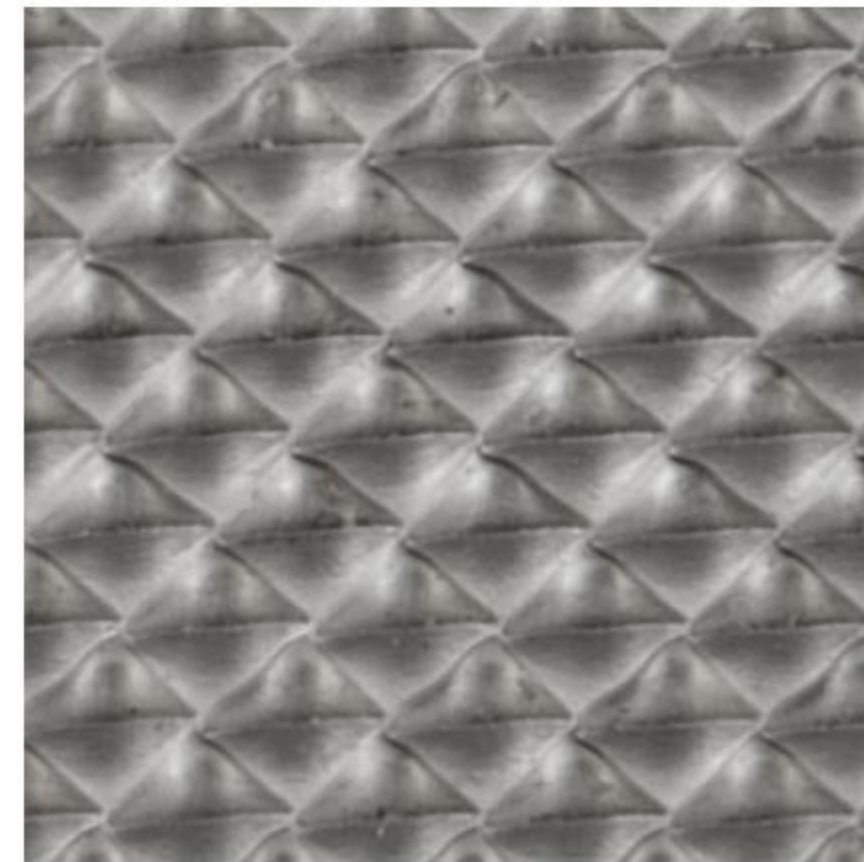
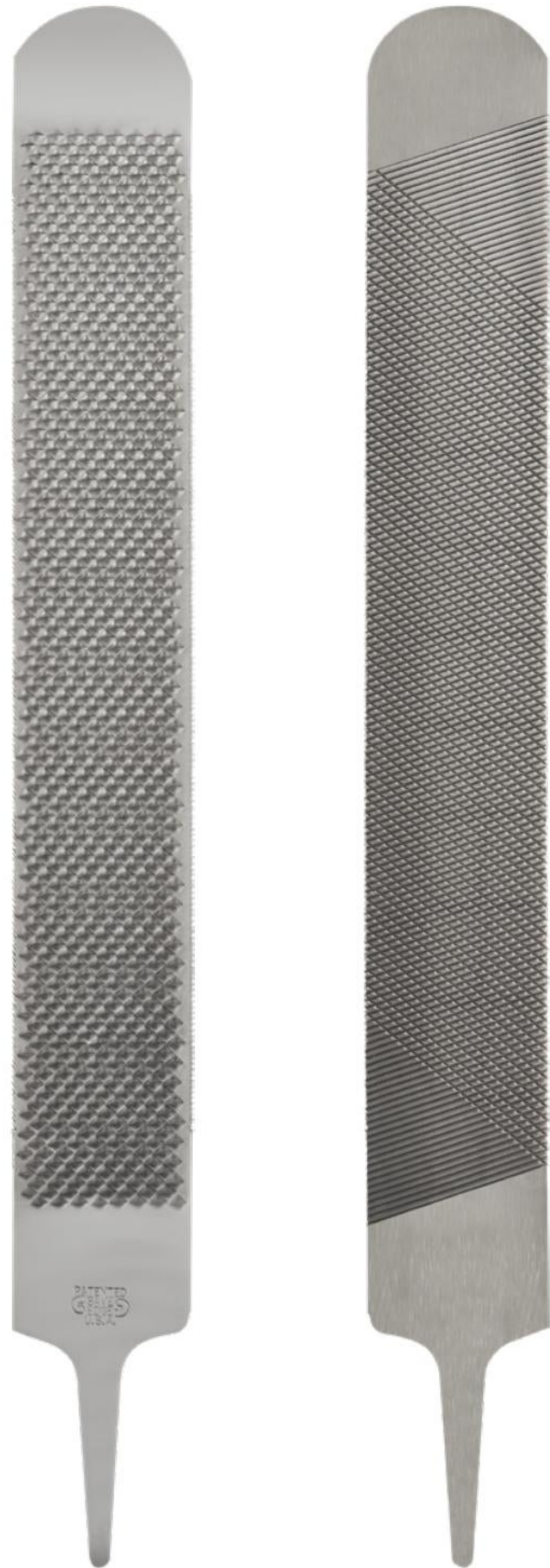
- 23% more cutting surface
- Large rounded end
- Fewer strokes needed, easy levelling
- Unique sharpening technology

RASP CUT ★★★★★
 FILE FINISH ★★★

Save Edge Beast Hoof Rasp - 350 mm

725-0001-033

BEAST 17"



The 17" BEAST Rasp's extra width provides 40% more cutting surface! The BEAST allows you to achieve a level hoof in fewer strokes. The large, rounded end provides a comfortable grip while working on the hoof. This rasp can be used with the normal Save Edge rasp handles.

Features

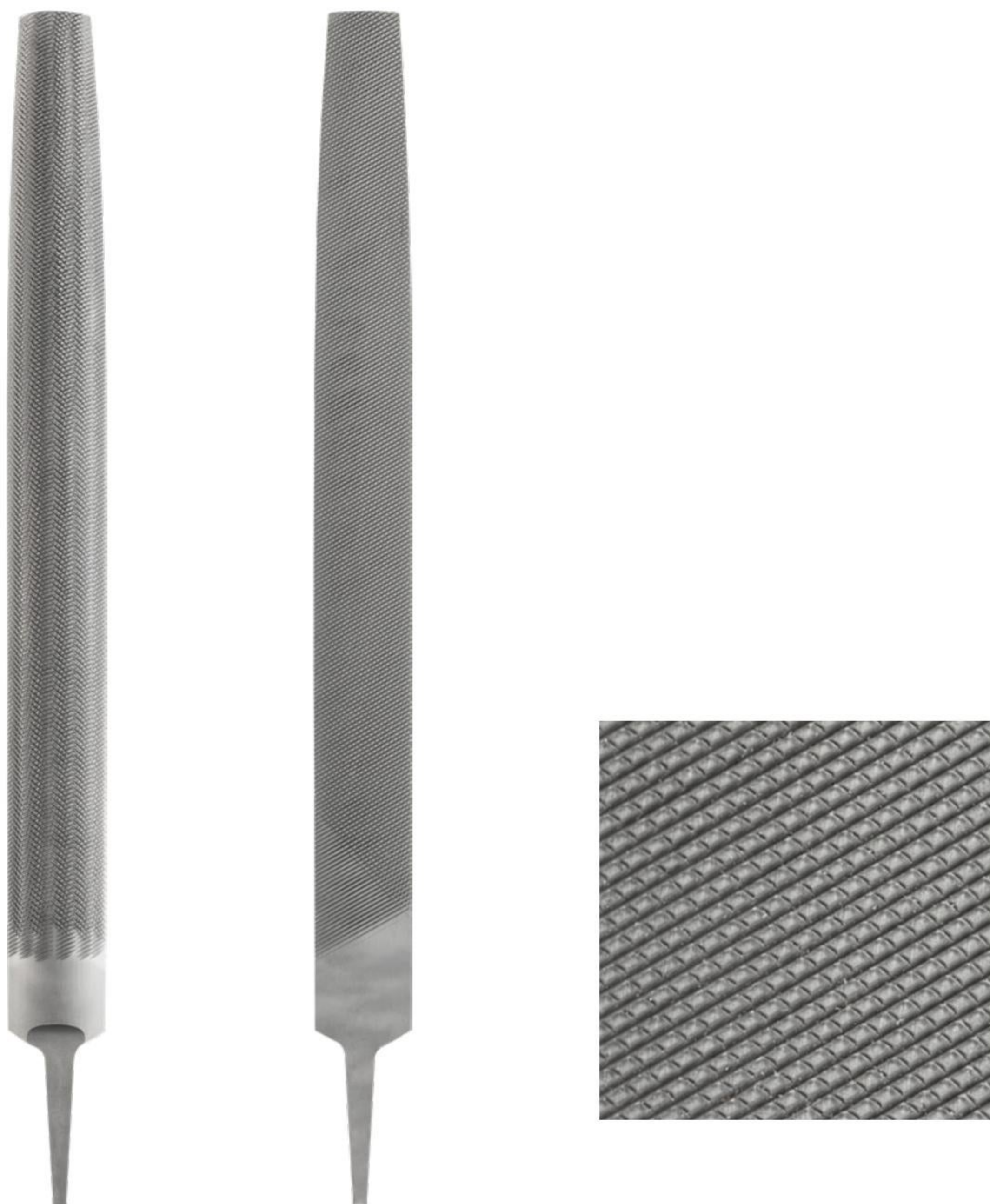
- 40% more cutting surface
- Large rounded end
- Fewer strokes needed
- Unique sharpening technology

RASP CUT ★★★★★
 FILE FINISH ★★★

Save Edge Beast Hoof Rasp - 430 mm

725-0001-515

14" HALF ROUND BASTARD FILE



This Save Edge Half Round File 14 inch has sharp teeth that make quick work of shaping steel or horn surfaces. Crafted from top-quality steel for lasting performance. The sharpest half round file in the market due to our unique sharpening process.

Features

- Sharp teeth
- Unique sharpening process for high durability
- Top quality steel
- Half round design

Save Edge Half Round File - 350 mm

725-0001-503

HOOK & LOOP FILE



Perfect for loop knives and the curl of your everyday hoof knives. The handle has a guiding head that assists sharpening under the correct angles. The twisted teeth around the steel prevents creating unwanted grooves and leaves a smooth result.

Features

- Durable diamond coating
- For loop knives and farrier hoof knives
- Durable sharpening tool
- Easy to use

RASP HANDLE ORIGINAL

The Save Edge Rasp Handle Original is the rasp handle designed for comfortable use of standard hoof rasps such as the Save Edge Original and Photo Finish. The handle provides a firm grip on the rasp, allowing accurate trimming and filing of the horse's hooves.

Features

- Universal drive-on handle for rasps
- Ergonomic design
- Firm grip
- Durable material
- Easy to clean
- Available in blue and pink



Save Edge Rasp Handle Original Blue

725-0002-051

Save Edge Rasp Handle Original Pink

725-0002-052

RASP HANDLE WIDE



The Save Edge Rasp Handle Wide is the rasp handle designed for comfortable use of wide rasps such as the White Horse and Dark Horse. The handle provides a firm grip on the rasp, allowing accurate trimming and filing of the horse's hooves.

Features

- Universal drive-on handle for wide rasps
- Ergonomic design
- Firm grip
- Durable material
- Easy to clean
- Available in green and purple

Save Edge Rasp Handle Wide Green

725-0002-049

Save Edge Rasp Handle Wide Purple

725-0002-050

RASP HANDLE



The rounded end lays perfectly in the palm of your hand in all different rasping positions. It moves with your hand in every rasping motion. The double threads inside grip the tang of the rasp firmly and provide stability on the rasp allowing full control of your motions. Fits all our rasps and can be attached by a simple twisting motion.

Features

- Rounded design
- Comfort in rasp movement
- Screw on handle with double gripping threads
- High quality plastic
- Universal fit, including heavier rasps
- Available in blue, red, white and black

Save Edge Rasp Handle Blue	725-0002-005
Save Edge Rasp Handle Black	725-0002-006
Save Edge Rasp Handle Red	725-0002-020
Save Edge Rasp Handle White	725-0002-021



DIAMOND KNIFE SHARPENER



With the diamond Knife Sharpener from Save Edge you can effortlessly get your knives razor sharp again. This sharpener has a durable diamond coating and is ideal for straight blades and hoof knives. A great tool for sharpening and deburring.

Features

- Durable diamond coating
- For straight blades and farrier knives
- Durable sharpening tool
- Easy to use

ANVIL DEVIL

The Save Edge Anvil Devil is a triangular piece of tool steel used for cutting and marking bar stock. The carbide/tool steel mix fits into a devil holder that is placed into the anvil in the hardie hole. Or place it on top of the anvil to scar the steel to break it.

Features

- Triangular design
- Fits in hardie hole/square hole of anvil
- Designed for cutting and marking bar stock
- Made of carbide/tool steel





KERCKHAERT
— ROYAL HORSESHOE FACTORY —

Leading the World in Horseshoes, Nails, Tools, and Accessories

The Royal Kerckhaert Horseshoe Factory is a proud family business, where the passion for craftsmanship and innovation has been passed down through four generations. Over the decades, Kerckhaert has grown into a global leader and is now the world's largest independent horseshoe manufacturer.

Through the Kerckhaert House of Brands, Royal Kerckhaert offers farriers a complete range of premium horseshoes, nails, tools and hoof care accessories. The company supplies dealers in more than 88 countries and that number continues to grow.

Wherever there are horses, there's Kerckhaert.

www.kerckhaert.com



Royal Kerckhaert B.V.
Rapenburg 76
4581 AE Vogelwaard
The Netherlands

Tel: 0031 114 671361
Email: post@kerckhaert.com

Opening hours:
Mon to Fri: 08:00 - 17:00



www.kerckhaert.com/saveedge



BUILDING BLOCKS OF SUCCESS

The House of Brands by Royal Kerckhaert Horseshoe Factory is home to a range of powerful and original brands of horseshoes, nails, farrier tools and accessories. It offers professional farriers the advantage of one dedicated partner offering the most specialised brands and products in their field. It serves as a convenient one-stop-shop, supplying all the essentials for high-quality and professional work.